

Seaforth Stella Picture House

Armada Model Designs Ltd

SG03A

Funded partly by voluntary effort and partly by the Heritage Lottery Fund, the Seaforth Gladstone Memorial Project (Seaglam) raises the profile of Seaforth by highlighting the village's rich history and inspiring local pride.

For a period of 10 weeks in 2013, the Seaglam Model Making Project provided an opportunity for local people to learn new skills constructing scale models of significant buildings from Seaforth's history. The old Stella Picture House was one of the models created.

The Seaforth Stella Picture House was opened in December 1920 and was designed by the Southport architect, George E Tonge. It had 1,250 seats (stalls and balcony).



It was Independently operated until 1943 when it became part of Bedford cinemas (1928) Ltd. It closed in July 1958, and reopened in May 1959 as a roller skating rink. The building was demolished in 1964 and the site was redeveloped as the Stella Shopping Precinct.



Trivia: Seaforth Stella Picture House was the young Kenny Everett's local cinema.

www.armadamodels.co.uk

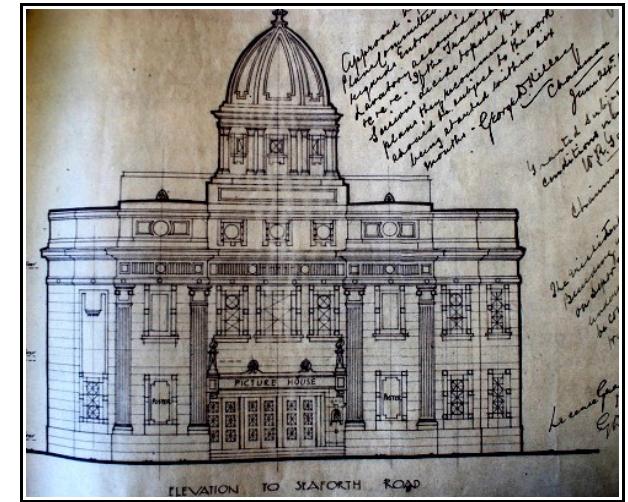
SEAGLAM 
Model Making Project





Instructions

The tools required for card modelling (referred to as paper modeling in the USA) are generally to be found around the home. This model requires scissors or a knife to cut out the components, a ruler for scoring straight lines and some glue (PVA white-glue, used sparingly is best but Uhu, Bostick or even Pritt Stick will do). Careful scoring of fold-lines is the key to accuracy of shape. Score-lines can be made using a pin or perhaps a blunt craft knife.



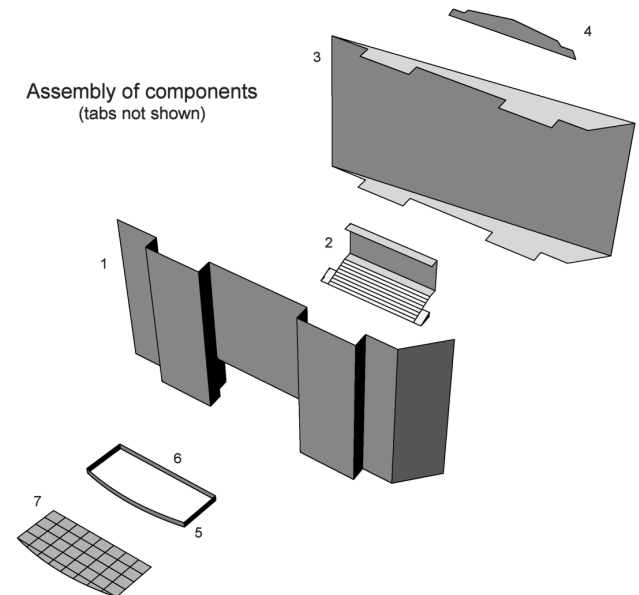
This model requires 2 sheets of 160gsm white card to build. Glue-tabs are denoted by a

stippled pattern. All glue tabs should be scored and folded. Look at the assembly diagram carefully. Fold lines will need to be scored before cutting items from their sheet. Most components are folded back on themselves as viewed from the printed side (so called crest folds). Others are folded in the opposite direction (valley folds). Study the assembly illustrations to deduce the direction of fold.

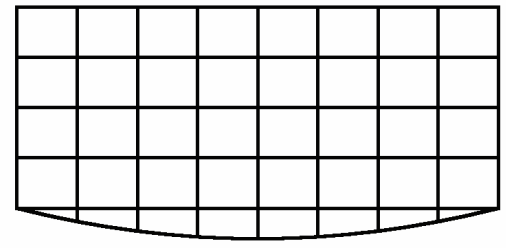
Work on a flat table or workbench to keep all parts as straight as possible. As with all card models, the white edges of the cut components can be disguised by applying water colour paint of the same shade.



Seaforth Road, showing Stella Picture House.



2



CANOPY GLASS - Trace onto acetate sheet and cut out



© 2013 Armada Model Designs Ltd
www.armadamodels.co.uk

7



4

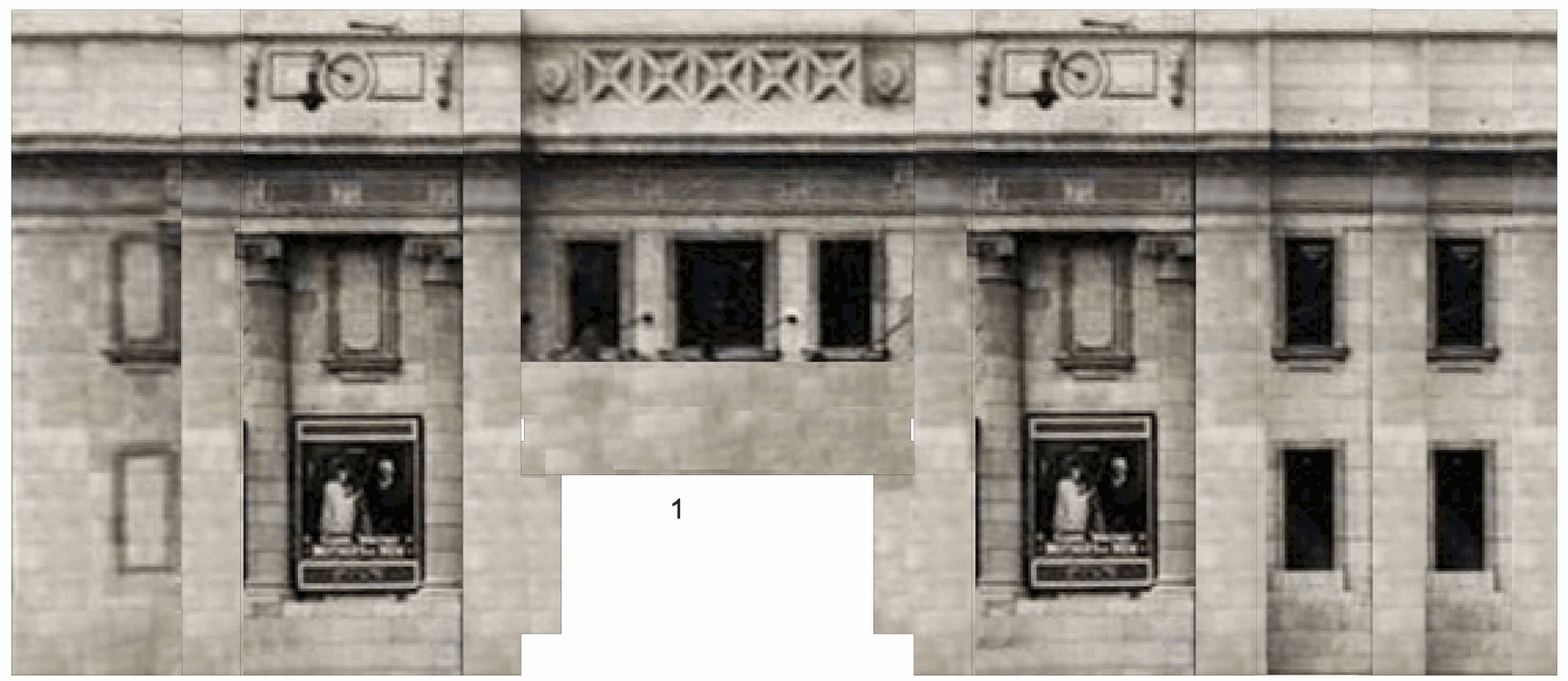
GLUE THESE COMPONENTS TO MOUNTING BOARD



5



6



1



Seaforth Stella Picture House

SG03 Sheet 2, Rev 0

